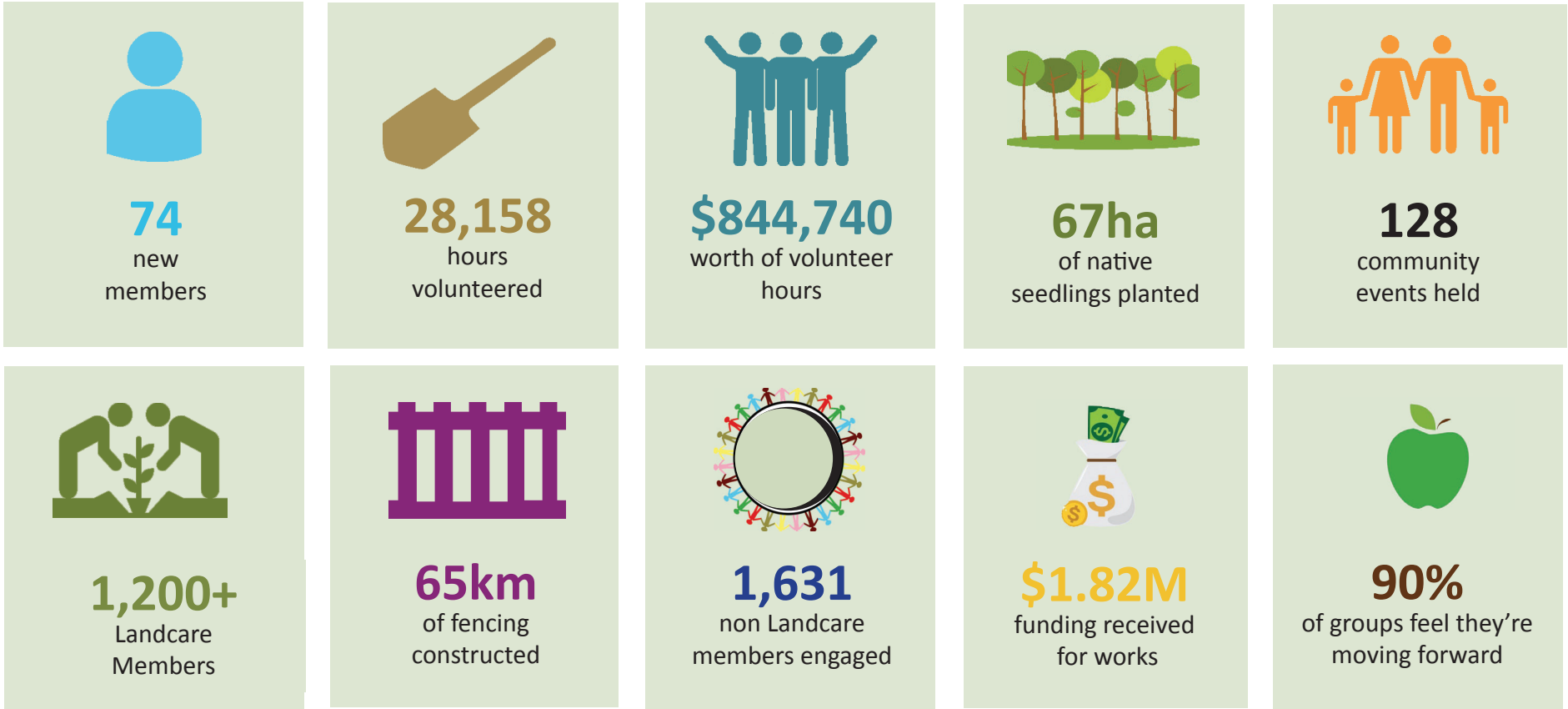


Landcare East Gippsland 2019 - 2020 Snapshot

The following data has been captured from those Groups that completed the Landcare Group Health Survey.

The enthusiasm and passion of Landcare volunteers throughout East Gippsland is demonstrated in their commitment to the projects they put their hands to. They dedicate their time to take on projects that improve both environmental and recreational opportunities in our region. The East Gippsland Catchment Management Authority would like to acknowledge the dedication and value of our Landcare volunteers and their contribution to the environment and our community as we present this snapshot of their hard work over the last twelve months.

- Graeme Dear, CEO East Gippsland Catchment Management Authority.



This publication may be of assistance to you but the East Gippsland Catchment Authority and its employees do not guarantee that it is without flaw of any kind or is wholly appropriate for your particular purposes and therefore disclaims all liability for any error, loss or other consequences which may arise from you relying on any information in this publication.

East Gippsland Catchment Management Authority | PO Box 1012 Bainsdale, 3875 | t: 5152 0600 | www.egcma.com.au Follow us: www.facebook.com/eastgippslandcma

All pictures taken pre coronavirus.

