



**Regional
Landcare**
East Gippsland



EAST GIPPSLAND
CATCHMENT
MANAGEMENT
AUTHORITY

REGIONAL LANDCARE SUPPORT PLAN 2020 - 2025



Plan Purpose

The Regional Landcare Support Plan outlines actions that the East Gippsland Catchment Management Authority (EGCMA) will undertake to support Landcare in the region.

Background

Landcare is an established and respected community-based movement in East Gippsland. Landcare networks work with local Landcare groups engaging their communities to address local and landscape-scale issues by;

- taking direct action through on-ground works,
- up-skilling their volunteers, and
- working in partnership with government agencies and other stakeholders.

This plan was developed following a review of the previous plan which took place in 2018 and a Landcare Connections workshop that was held in 2019 to explore the local Landcare relationships within the region. This plan, with input from the East Gippsland Regional Landcare Coordinator, Landcare Network Chairs, regional Landcare staff and EGCMA staff, builds on the previous plan.

This Regional Landcare Support Plan explains how the EGCMA will continue to support Landcare in the region – working together to protect and enhance our natural assets.

Collaborative Efforts

Landcare networks and groups have a long history of successfully addressing land management challenges by undertaking works that improve the health and condition of the environment and the sustainability of the region.

The EGCMA disseminates Government policy and information to the community of East Gippsland and provides strategic leadership on current and emerging government initiatives in natural resource management. It acts as a conduit between government and community to build cooperative connections between the two. The EGCMA recognises the importance of establishing strong partnerships with the community, government, business and stakeholders which assist in building a sustainable economic, social and ecological future for the region.

The Landcare networks and groups across the region are valued partners of the EGCMA. Other regional partners, government and non-government also play a role in assisting Landcare in the region.



EGCMA's role and commitment to support Landcare

The EGCMA recognises the important role community groups play in protecting and enhancing the region. It also recognises and values the significant volunteer movement in natural resource management (NRM) that is characteristic of the regional community. Dedicated community members are fundamental to managing natural resources in the region.

The EGCMA designs its support with the aim of helping the Landcare community to achieve their goals and contribute to regional natural resource management goals. This will benefit the well-being of land, people and communities within the East Gippsland region.

The EGCMA is committed to:

- Helping Landcare groups and networks to align with natural resource management priorities and efforts across the state and region and therefore accessing funds to carry out priority work.
- Helping Landcare groups communicate local priorities to the state government.
- Sustaining Landcare groups and networks through supporting them to achieve their goals by assisting with administrative and management tasks.
- Expanding Landcare pathways into the future by assisting groups and networks to explore new opportunities.
- Valuing Landcare efforts in the region by publicly recognising and rewarding Landcare contributions and successes.
- Understanding the strengths and barriers to Landcare and striving for continual improvement.

Landcare in East Gippsland

The region is extensive and stretches from near Bairnsdale to the NSW border. Landcare in East Gippsland has three networks: East Gippsland Landcare Network, Far East Victoria Landcare and Snowy River Interstate Landcare Committee. The networks support Landcare groups and several NRM interest groups.

The region has 32 Landcare groups formed with their own plans and objectives that they achieve individually and collectively. The groups are largely run by volunteers, with some professional assistance shown below. Landcare volunteers are wide ranging. They work on public and private land, in forests, parks and on farmland. All volunteers are supported by the local networks and within this Landcare Support Plan.

The region has a number of people employed to work with Landcare to support many volunteers. Table 1 explains the key Landcare positions within the region. Figure 1 on the following page shows the connections between the Landcare groups that work within Landcare in the region.

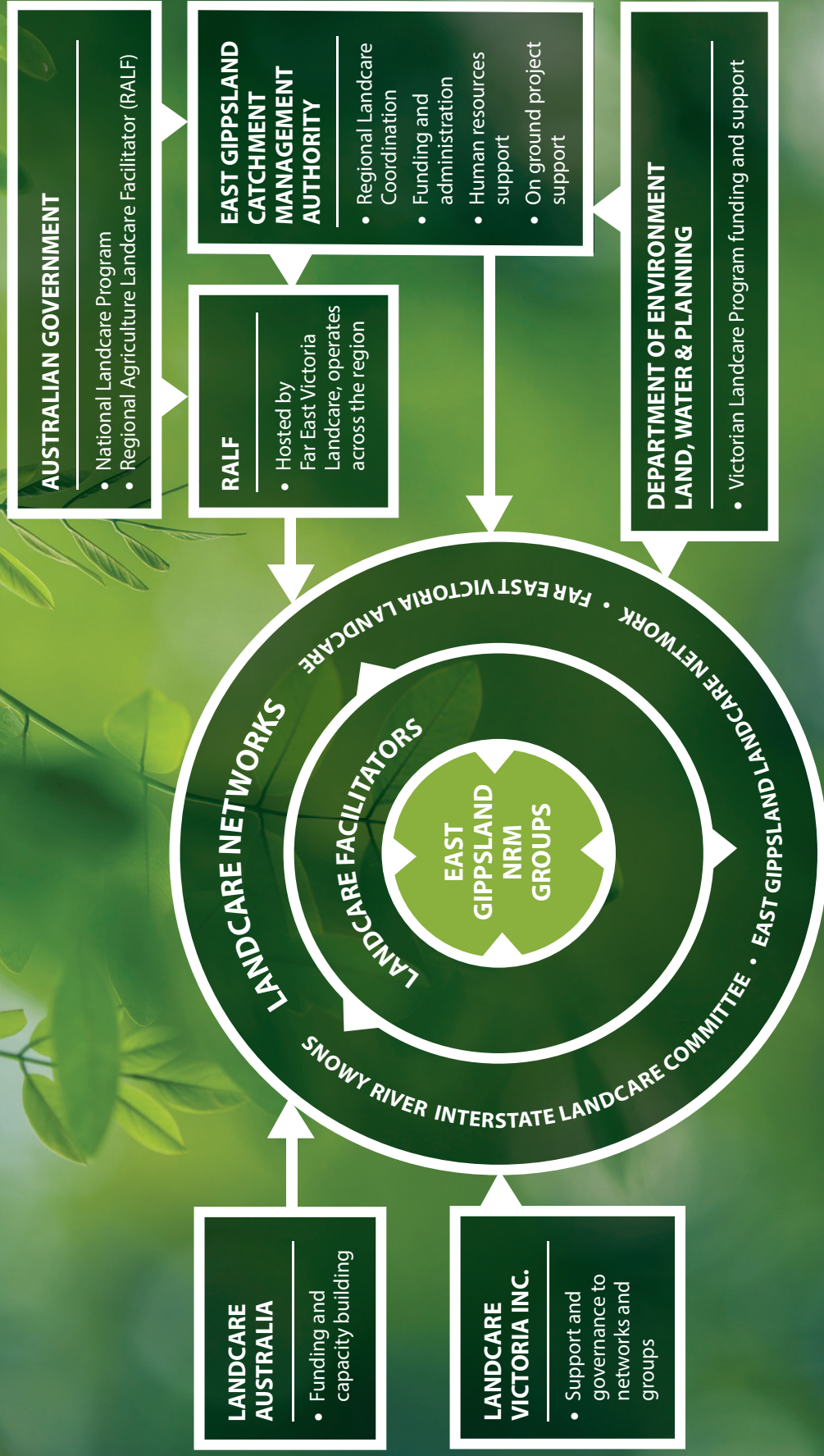
TITLE	ROLE
<p>Regional Landcare Coordinator</p> <p>Funded by State Government (DELWP), employed by EGCMA</p>	<p>The Regional Landcare Coordinator, employed by the EGCMA provides strategic guidance, coordination and support for the Landcare program across the East Gippsland region. The position is focused on establishing links between state government priorities for investment and Landcare regional priorities.</p>
<p>Regional Agriculture Landcare Facilitator (RALF)</p> <p>Funded by the Commonwealth Government’s Department of Agriculture and Water Resources, hosted by Far East Victoria Landcare</p>	<p>The role of the RALF contributes to:</p> <ul style="list-style-type: none"> • an increase in the awareness and adoption of land management practices that improve and protect the condition of soil, biodiversity and vegetation. • an increase in the capacity of agriculture systems to adapt to significant changes in climate and market demands for information on provenance and sustainable production.
<p>Landcare Network Coordinators & Landcare Facilitators</p> <p>Funded by State Government (DELWP), employed by Landcare networks or groups</p>	<p>Assistance with management of the Landcare Network daily business operations’ including designing, developing and securing resources and delivering multiple projects in line with the Landcare Group Action/Strategic Plans and the Network Strategic Plan. They support Landcare groups and assist to build the capacity of groups.</p>

Table 1: Roles of employed Landcare staff in East Gippsland

Figure 1: on the next page shows the East Gippsland Landcare Connections graphic

East Gippsland Landcare Connections

VOLUNTEERS PEOPLE PLACES PASSION





Landcare Support Plan 2020 - 2025

The purpose of the plan is to outline the actions that the EGCMA will undertake to support Landcare in the region. The outcomes of actions delivered through this plan are not limited to Landcare they also support other volunteer NRM groups.

Well supported networks will be able to focus on achieving their goals.

The EGCMA is responsible for and will lead the delivery of this plan. The plan exists to benefit the Landcare networks and groups within the region. Executive members of the networks and Landcare staff were consulted throughout the review of the previous plan and in the development of this plan.

The following themes have been developed using *Victoria's Volunteering for Nature, Environmental Volunteering Plan 2018* developed by the Department of Environment, Land, Water & Planning.

The themes will guide the development of an annual action plan. Annual actions will be developed following conversations with the staff and executives of each Landcare network, and a dedicated planning workshop. At the annual workshop, ideas can be explored together and priorities for support will be agreed upon for the upcoming twelve month period.



Five key themes and the associated objectives will guide the development of annual actions, these are:

Theme: Align

Objective: Align our work across the region

- Focus on Landcare relationships with government and non-government organisations, maximising opportunities to achieve the goals of the Landcare networks where they align with regional priorities.
- Facilitate collaborative efforts where goals of Landcare align with those of government and non-government organisations.

Why align our work across the region?

Where there are shared goals, collaboration between Landcare and partner organisations can fast track outcomes giving benefits to volunteers and the environment.

Theme: Sustain

Objective: Support networks to achieve their goal

- Make it easier for volunteers and groups to get on with the job of volunteering, reduce the burden of legal and administrative tasks that limit time available to look after the natural environment.

Why support networks to achieve their goals?

By streamlining administrative work and allowing Landcare groups and networks to focus on achieving their goals, volunteers can get on with what they signed up for – looking after the environment, local communities and caring for the land.

Theme: Expand

Objective: Expand beyond the usual ways of Landcare

- Develop new ideas and ways to act for the environment through encouragement of inclusive, relevant and diverse opportunities for volunteering in the region.

Why expand beyond the usual ways of Landcare?

Different mechanisms for engagement of volunteers may result in attracting a different range of demographics to Landcare resulting in new volunteers to expand the Landcare movement in the region.

Theme: Value

Objective: Communicate and celebrate the efforts of Landcare

- Recognise and celebrate Landcare within government and the broader community.

Why communicate and celebrate the efforts of Landcare in the region?

To raise the profile of Landcare and its achievements so that volunteers feel valued and understand their collective impact on the health of our region. New volunteers may be attracted by the ongoing success of the movement.

Theme: Understand

Objective: Understand motivations, barriers and opportunities concerning Landcare volunteering to inform program design and continuous improvement

- Work with networks to monitor and review Landcare across the region and work to continuously improve the regional Landcare movement.

Why understand motivations, barriers and opportunities concerning Landcare volunteering to inform program design and continuous improvement?

With a better understanding of motivations, barriers and opportunities, we can create relevant projects and improve the volunteer experience, leading to better outcomes for East Gippsland's environment.

Plan Implementation

Landcare Support Plan Themes

Align
Sustain
Expand
Value
Understand



Annual Action Planning Process

EGCMA staff meet with Landcare facilitators and volunteer committee members to talk through actions for the year ahead.

Workshop with EGCMA staff and all Landcare Networks to develop a draft of the annual plan, identifying and prioritising actions.

Plan is finalised by the EGCMA.



Annual Action Plan Implemented

EGCMA staff, Landcare facilitators and Landcare Networks implement the actions and activities together. Utilise existing meeting cycles (e.g. quarterly meetings) to check in on plan deliverables.



Plan Monitoring and Review

At the annual planning meetings and workshop, the previous year's action plan will be reviewed. Information and data will be recorded against each activity to ensure the EGCMA are meeting their reporting obligations to DELWP.

Theme	Objective	Annual Actions	Priority	Who & When?
Align	<p>Align our work across the region</p> <ul style="list-style-type: none"> Focus on Landcare relationships with government and non-government organisations, maximising opportunities to achieve the goals of the Landcare networks where they align with regional priorities Facilitate collaborative efforts where goals of Landcare align with those of government and non-government organisations 			
Sustain	<p>Support networks to achieve their goals</p> <ul style="list-style-type: none"> Make it easier for volunteers and groups to get on with the job of volunteering, reduce the burden of legal and administrative tasks that limit time available to look after our natural environment 			
Expand	<p>Expand beyond the usual ways of Landcare</p> <ul style="list-style-type: none"> Develop new ideas and ways to act for the environment through encouragement of inclusive, relevant and diverse opportunities for volunteering in the region 			
Value	<p>Communicate and celebrate the efforts of Landcare</p> <ul style="list-style-type: none"> Recognise and celebrate Landcare within government and the broader community 			
Understand	<p>Understand motivations, barriers and opportunities concerning Landcare volunteering to inform program design and continuous improvement</p> <ul style="list-style-type: none"> Work with networks to monitor and review Landcare across the region and work to continuously improve the regional Landcare movement 			

