

Landcare East Gippsland 2022-2023 Snapshot



‘The passion and efforts that Landcare volunteers dedicate to East Gippsland’s environment is showcased each year. The East Gippsland Catchment Management Authority would like to thank and acknowledge Landcare volunteers for all the fantastic work they have put in throughout the year. Landcare groups have worked hard to improve both environmental and recreational areas across the region for the whole community to enjoy’.

Bec Hemming, CEO East Gippsland Catchment Management Authority



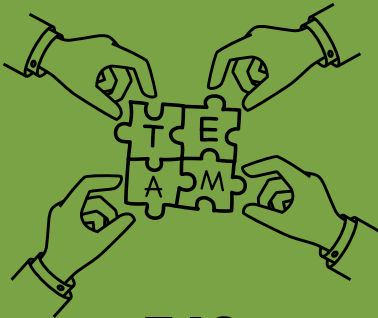
335ha

weed Control



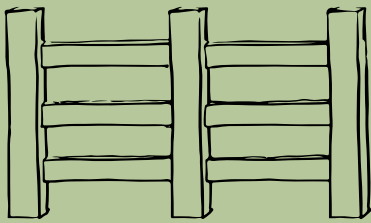
130ha

revegetated with native plants



742

Landcare Members



48km

fencing constructed



2827

non Landcare members engaged



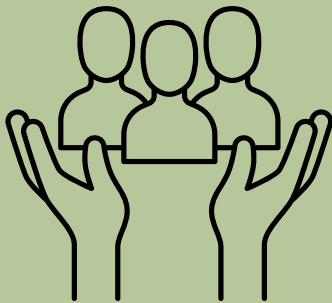
\$633,200

worth of volunteer hours



158

new members



178

community events held



15,830

hours volunteered



\$3.98m

funding received for works

This publication may be of assistance to you, but the East Gippsland Catchment Authority and its employees do not guarantee that it is without flaw of any kind or is wholly appropriate for your particular purposes and therefore disclaims all liability for any error, loss or other consequences which may arise from you relying on any information on in this publication.

East Gippsland Catchment Management Authority | PO Box 1012 Bairnsdale, 3875 | t: 5152 1184 | www.egcma.com.au
Follow us: www.facebook.com/eastgippslandcma



EAST GIPPSLAND
CATCHMENT
MANAGEMENT
AUTHORITY

